



Elm Grove Lutheran School 2010-2011 Supply List

PreK3

- 1 pocket folder (any design)
- 1 solid colored pocket folder w/o fasteners
- 1 large backpack
- 1 roll color film (35mm 24 exp.)
- 1 bottle Elmer's glue (4 oz.)
- 4 large glue sticks
- 1 large box of tissues
- 1 roll of paper towel

Please do not label items

1st Grade

- 1 bottle Elmer's glue (4 oz.) ***
- 2 glue sticks (.74 oz. or larger) ***
- 2 boxes Crayola crayons (24 ct.)
- Crayola watercolor paints (8 colors only)
- Crayola colored pencils (12 ct.)
- Eight - #2 pencils (sharpened)
- 4 large zippered pencil bags
- Old Shirt (down to knees) for Art
- 2 pocket folders *with* fasteners
- 2 pocket folders *without* fasteners
- 2 large erasers***
- 2 boxes washable markers (wide classic)
- 1 large box of tissues ***
- Gym shoes for PE ***no fashion tennis shoes***
- 1 wide-line spiral notebook for PE
- One 1" 3-ring binder

*** Please do not label these items**

PreK4

- 1 pocket folder (any design)
- 1 solid colored pocket folder w/o fasteners
- 1 large backpack
- 1 roll color film (35mm 24 exp.)
- 1 bottle Elmer's glue (4 oz.)
- 4 large glue sticks
- 1 large box of tissues
- 1 box Crayola Colored Pencils (12 ct.)

Please do not label items

2nd Grade

- 12-#2 sharpened pencils
- 1 **Elmer's** glue (4 oz.) white only
- Crayola crayons (24 ct.)
- Old Shirt (down to knees w/sleeves to elbow)
- 2 pocket folders with fasteners
- 3 pocket folders without fasteners
- 2 large erasers
- Crayola watercolor paints (8 colors only)
- Set of washable markers (classic wide colors)
- 3 large glue sticks or 6 small
- 2 boxes Crayola colored pencils (12)
- Supply Box (5" x 8" x 2 1/2")
- 2 zippered pencil pouches
- 2 large boxes of tissues
- Gym shoes for PE ***no fashion tennis shoes***
- NO TRAPPER KEEPERS OR RING BINDERS**

Kindergarten

- 1 large backpack
- 1 pocket folder
- 5 large glue sticks (.77 oz. or larger **ONLY***)
- 1 bottle Elmer's glue (4 oz.)
- Crayola crayons (16 ct.) 2 boxes
- Crayola watercolor paints (8 colors only)
- Plastic 5" x 8" school box
- 1 container Clorox/Lysol wipes
- 1 large box of tissues*
- 1 box of 5oz. Dixie Cups* or 1 roll paper towels*
- Gym shoes for PE ***no fashion tennis shoes***
- Eraser

3rd Grade

- #2 pencils (no mechanical) and sharpener
- Box of 24 crayons
- Sharp scissors
- Eraser
- Watercolor paints (8 classic colors only)
- Art smock
- Wideline loose-leaf paper (150 count)
- 1 bottle glue (8 oz.) white only
- 1 glue stick
- Washable markers (wide classic colors)
- Rubbermaid shoe box
- 1 box colored pencils
- One 1" three-ring binder (no larger)
- NO ZIPPERED BINDERS—please*
- 2 pocket folders
- 2 large boxes of tissues
- 2 containers Clorox/Lysol wipes
- "All God's People Sing"
- Gym shoes for PE ***no fashion tennis shoes***
- Assignment Book (provided)

K-8 PLEASE LABEL ALL ITEMS

Elm Grove Lutheran School 2010-2011 Supply List - page 2

4th Grade

NIV Bible
"All God's People Sing"
#2 pencils (no mechanical) and sharpener
1 red pen
Black/blue erasable pens
12" ruler (cm. & in.)
Elmer's glue 8 oz. - *white only*
Glue Stick
Wide loose-leaf paper (200 ct.)
Eraser
Sharp scissors
Crayola crayons (24 ct.)
Crayola washable markers (wide classic)
Crayola watercolor paints (8 colors only)
Crayola Colored pencils (12)
One 1½" three-ring binder (zippered binders are acceptable)
Rubbermaid shoe box
Yellow highlighter
2 large boxes of tissues
2 containers Clorox/Lysol wipes
Gym shoes for PE **no fashion tennis shoes**
Assignment Book (provided)



CHOIR ATTIRE (required for all 3-8)

Girls:

White blouse or sweater (no midriff skin should show when arms are raised)

Black or dark navy blue skirt (of modest length) or black or dark navy slacks

Sensible dress shoes

Boys:

White shirt (tucked in) with a tie

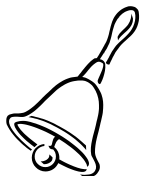
Black or dark navy slacks, belted—no jeans

Sensible dress shoes

5th, 6th, 7th and 8th Grades

NIV Bible (5-6 only)
"All God's People Sing" (that you were provided)
Red, blue and black pens—**ONLY**
#2 pencils (*can be #2 mechanical*)
Wide-line loose-leaf paper (200ct.) LOTS!!!!
12" ruler (cm. & in.)
Compass
Protractor
TI-30 calculator (5 & 6 Math)
TI-84 calculator (7 & 8 Math)
Highlighter
15 pocket folders (center tabs as part of cover, not stapled in)
Pencil Sharpener
Paper bags for book covers or fabric book covers (at least three XL)
3 **large** boxes of tissues
2 containers *Clorox/Lysol* wipes
Assignment book (provided)

**NO WITE-OUT®,
NO PERMANENT MARKERS**



HANDBELL SUPPLIES

4-pack highlighters (NO dark or permanent)

P.E. UNIFORM

(required for all 5-8)

1 Primary uniform (purchased from school office)

1 Secondary uniform

- plain T-shirt w/name written on front
- blue/black shorts
- Gym shoes **no fashion tennis shoes, sandals, hiking boots, etc.**

1 Stick deodorant

ART SUPPLIES (5-8)

THESE WILL BE LABELED AT SCHOOL

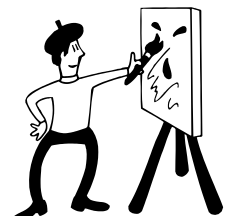
Crayola washable markers (wide classic)

Crayola colored pencils (24 ct.)

Crayola crayons (24 ct.)

Sharp scissors

Elmer's glue *white only*



K-8 PLEASE LABEL ALL ITEMS